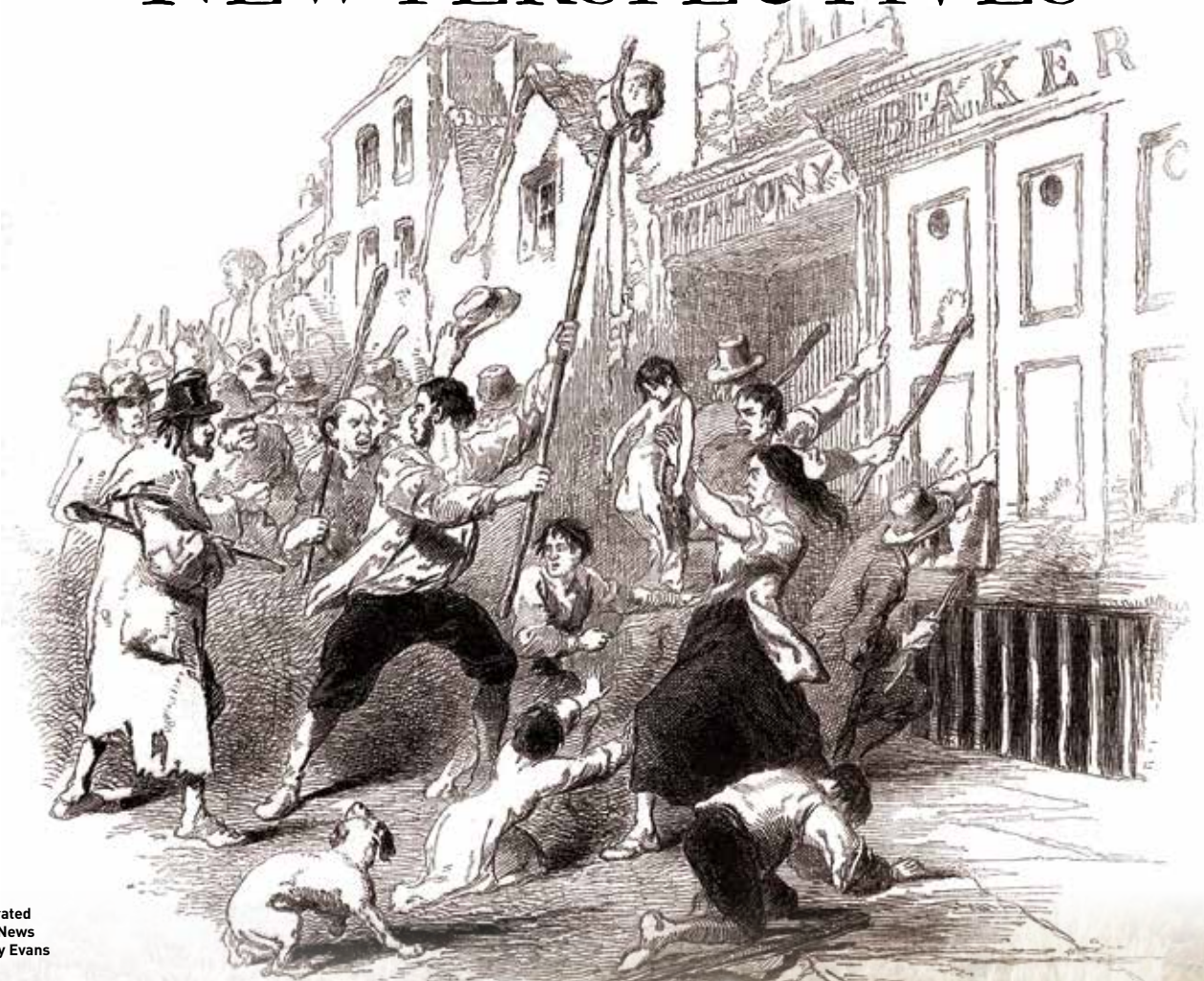


A CONFERENCE ON

UNDERSTANDING IRELAND'S GREAT FAMINE: NEW PERSPECTIVES



© Illustrated
London News
Ltd/Mary Evans

Friday 27th

Saturday 28th

Sunday 29th June 2014

Carlton Shearwater Hotel,
Ballinasloe, Co. Galway

<http://galwayfamineconference.wordpress.com/>

Friday 27th June

From 5.30pm Registration

6.15pm Reception

7-8pm Opening of Conference & Keynote Lecture

Professor Christine Kinealy, Ireland's Great Hunger Institute, Quinnipiac University*
The Bankers of Threadneedle Street and the Great Irish Famine

Saturday 28th June

9-10am Registration

10-11.15am **Session 1**

Historical Geographies & Economic Histories of the Great Famine

Professor William J. Smyth (Emeritus Geography, University College Cork)

Atlas of the Great Irish Famine: Exploring Anomalies in the Patterns of Population Losses

Professor Terrence McDonough (Economics, National University of Ireland, Galway)

Natural Disasters as Social Collapse: The Case of the Irish Famine

11.15-11.45am Coffee

11.45-1pm **Session 2**

Histories of Starvation, Survival and Resistance

Kathleen Villiers-Tuthill (Writer & Historian)

Resistance For Survival During the Great Famine in Connemara

Dr Gerard Moran (Emeritus History, National University of Ireland, Maynooth)

From Starvation to Survival: Life in the Workhouses During the Great Famine

1-2.30pm Lunch

2.30-4pm **Session 3**

Memory, Memoirs and the Archaeology of the Great Famine

Dr Maura Cronin (History, Mary Immaculate College, University of Limerick)

Remembering and Mis-Remembering the Famine: Memoir and Oral History

Maggie Ronayne (Archaeology, National University of Ireland, Galway)

Exploring The Archaeology of Ireland's Great Famine

Dr Christy Cunniffe (Field Monument Advisor, Galway County Council)

Archaeological Evidence for Changing Settlement Patterns in the Slieve Aughty Area on the Eve of the Famine

4-4.30pm Coffee

4.30-5.15pm **Session 4**

A Community Perspective on the Great Famine

An open session where community groups or individual researchers can speak from the floor for 5 minutes about a project, announce a future event, make a comment or begin a discussion about work on the ground.

5.15pm Final Summary and Discussion

Professor Christine Kinealy and **Professor William J. Smyth** will act as discussants to sum up the conference and lead a final discussion.

Sunday 29th June

Field Trip: Famine Heritage in South Galway
Hosted by Kilchreest Castledaly Heritage Group

Please note: The field trip is subject to availability and limited to 25 places on each option on a first-come, first-served basis.

9am sharp: Bus departs from the Carlton Shearwater Hotel, Ballinasloe

*Professor Kinealy's participation was made possible by NUI Galway's Millennium Fund

Option A:

10am Visit Woodville Walled Garden, Kilchreest: Local historian Gerry Daly will speak on the activities of the Perse family during the Famine. Margarita Donoghue is owner of Woodville Walled Garden and House where Robert Darcy lived, who was land agent for the First Marquis of Clanrickarde during the Famine. She will speak about this link.

Option B:

10am Visit a 19th-century clachan settlement, pre-Famine field systems and booley sites in the upland townland of Kilnagappagh. This part of the trip will be led by Kevin Cunningham from the Kilchreest-Castledaly Community Archaeology Project and Christy Cunniffe, Field Monument Advisor to Galway County Council.

NB This is a more strenuous option involving walking uphill on occasion over rough and water-logged terrain. Participants must wear wellingtons and all weather clothing.

Option A and B will join together at lunchtime and for the afternoon:

- 1pm Lunch at Woodville Walled Garden, Kilchreest
- 2pm Depart for Portumna
- 2.40pm Arrive at Irish Workhouse Centre in Portumna
- 4.30pm Depart Irish Workhouse Centre
- 5.30pm Arrive back at the hotel

Websites With More Information

Conference website: <http://galwayfamineconference.wordpress.com/>

Galway County Council: www.galway.ie

Archaeology at NUI Galway:

www.nuigalway.ie/archaeology/Archaeology_Anniversary/archaeology_anniversary.html

Accommodation

There are a number of hotels, guesthouses and hostels in or close to the town of Ballinasloe. If you prefer to stay in Galway city or the town of Athlone, both are only a short journey by train from Ballinasloe with regular services through-out the day.

For lists of accommodation, see:

<http://www.discoverireland.ie/places-to-go/ballinasloe/0/23/517>

Speaker Profiles

Christine Kinealy has lectured worldwide on the Great Famine. Recently appointed founding Director of Ireland's Great Hunger Institute at Quinnipiac University, she has written sixteen books on modern Ireland with a focus on the Great Hunger, including: *This Great Calamity: The Great Irish Famine 1845-52* and *Charity and the Great Hunger in Ireland: The Kindness of Strangers*. She is a director of the Frederick Douglass/Daniel O'Connell Project.

William J. Smyth is Emeritus Professor (and former Department Chair) of Geography at University College Cork. He is author of *Map-making, Landscapes and Memory: A Geography of Colonial and Early Modern Ireland*, co-editor of *Common Ground: Essays on the Historical Geography of Ireland*, and former editor of the journal *Irish Geography*.

Terrence McDonough teaches at NUI Galway; previous appointments include Cornell University and Dublin City University. Research interests include globalisation, American and Irish economic history, political economy, the history of economic thought and economics education for labour and community groups. Publications include *Was Ireland a Colony? Economics, Politics, Ideology and Culture in the Irish Nineteenth Century*.

Kathleen Villiers-Tuthill is author of six books and many other works on the history of West County Galway. Her work is based principally on primary sources and she lectures frequently to local history societies and other groups throughout the country. She has received a number of awards including an honorary Master of Arts degree from NUI Galway.

Gerard Moran has lectured at NUI Galway and NUI Maynooth, where he established and directed the MA in Irish History. He has published extensively on nineteenth-century Ireland and research interests include Irish emigration and diaspora, agrarian agitation and social conditions in Ireland. He is the author of many books including *Sending Out Ireland's Poor: Assisted Emigration from Ireland in the Nineteenth Century*.

Maura Cronin lectures in History at Mary Immaculate College. Her main areas of research are nineteenth-century Irish social history (popular politicisation, labour organisation, and rural society), and the oral history of Irish social life since the 1930s.

Christy Cunniffe is an archaeologist with wide experience in the identification, recording and survey of archaeological monuments with a special emphasis on community archaeology. He is Field Monument Advisor to Galway County Council and is currently examining the upland pre-Famine archaeology of the northern slopes of the Slieve Aughty Mountains as part of the Kilchreest-Castledaly Community Archaeology Project.

Maggie Ronayne teaches at NUI Galway. Since 2010 she has directed the Burren Community Archaeology Project in County Clare, focusing on the archaeology of the Great Famine. She advises community groups and agencies on public and community archaeology projects. Since the 1990s, she has also researched development impacts in a number of countries, aiming to support communities, their environment and heritage.

Registration Form

To register and pay online go to:

<http://www.iregister.ie/galwayfamineconference>

Alternatively, please complete the form below in BLOCK CAPITALS and return to: **Understanding Ireland's Great Famine: New Perspectives** c/o Marie Mannion, Heritage Officer, Forward Planning, Áras an Chontae, Galway County Council, Prospect Hill, Galway, Ireland.

Tel: 00353 91 509198. Email: mmannion@galwaycoco.ie

We suggest that you photocopy this form for your records.

.....
Surname:.....

First Name:.....

Address:.....

Tel (landline & mobile):.....

Email:.....

REGISTRATION FEE

Please tick appropriate box

Conference Fees

- Friday Keynote Lecture and Reception
 WAGED €10 UNWAGED €5
- Saturday Lectures, tea/coffee & carvery lunch
 WAGED €20 UNWAGED €15
- Sunday Field Trip, tea/coffee, soup & sandwiches
 WAGED €20 UNWAGED €15

To register for the field trip, please choose an option:

Option A: Option B:

Please note: There are only 25 places available for each field trip option. Please contact Marie Mannion Tel: 091 509198 or email: mmannion@galwaycoco.ie prior to booking either option of the Sunday field trip.

Total €.....

PAYMENT

I enclose a cheque/bank draft for €..... (Euros) payable to Galway County Council and post to: 'Understanding Ireland's Great Famine: New Perspectives' c/o Marie Mannion, Heritage Officer, Forward Planning, Áras an Chontae, Galway County Council, Prospect Hill, Galway, Ireland.

Signed:..... Date: / /2014

How did you hear about this conference?

- Mailing Advert Internet Other

For Further Details Contact:

Ms. Marie Mannion
Heritage Officer

Forward Planning, Áras an Chontae, Galway County Council, Prospect Hill, Galway.
Tel: 00353 91 509198. Email: mmannion@galwaycoco.ie

The Galway Famine Network wishes to thank all speakers, community groups, institutions and individuals who have assisted in making this event possible.

Conference Partners

School of Geography and Archaeology at the National University of Ireland, Galway; Department of Heritage and Tourism at Galway-Mayo Institute of Technology; The Heritage Office of Galway County Council; Ireland's Great Hunger Institute, Quinnipiac University, USA; Galway County Heritage Forum

An action of Galway County Heritage Plan 2010-2016



NUI Galway
OÉ Gaillimh



Galway County Council
Cúirtle Contae Galway



QUINNIPIAC
UNIVERSITY